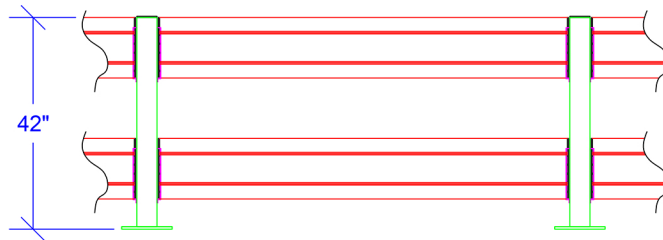
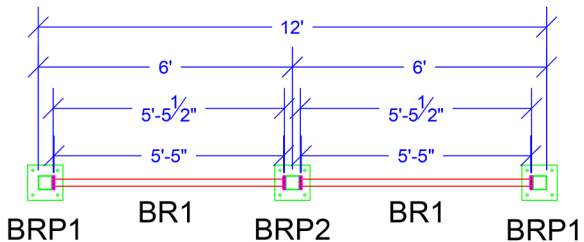


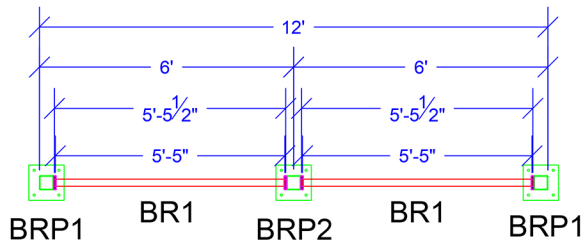
**DOUBLE RAIL BARRIER RAIL ATTACHMENT**



**ELEVATION A**



**SECTION "A" AT 12'**



**SECTION "B" AT 12'**

LEGEND	
	TELEDATA PREP
	SWITCH
	DUPLEX RECEPTACLE
	WINDOW
	DOOR
	EXTENDED COLUMN
	COLUMN
	1 BEAM (STRUCTURAL)
	COLD ROLLED MEMBER
	1 1/2 X 1 1/2 X 11 GA RAILING
	K-SERIES BAR JOIST

JOB NUMBER:	DRAWN BY:	CHECKED BY:	DATE:
-------------	-----------	-------------	-------

THIS DRAWING IS THE PROPERTY OF PANEL-BUILT, INC. AND MAY NOT BE REPRODUCED OR TRANSMITTED IN ANY FORM OR BY ANY MEANS WITHOUT THE WRITTEN PERMISSION OF PANEL-BUILT, INC. ALL INFORMATION CONTAINED HEREIN IS THE PROPERTY OF PANEL-BUILT, INC. AND MAY NOT BE REPRODUCED OR TRANSMITTED IN ANY FORM OR BY ANY MEANS WITHOUT THE WRITTEN PERMISSION OF PANEL-BUILT, INC.

**PANEL BUILT INCORPORATED**

300 SHELBY STREET  
 BIRMINGHAM, AL 35203  
 CONTACT US @ 205.988.2222 OR WWW.PANELBUILT.COM

LENGTH ± 1/8" > 10'-0" ± 1/4"  
 HOLES ± 1/16"

PAGE: S-1